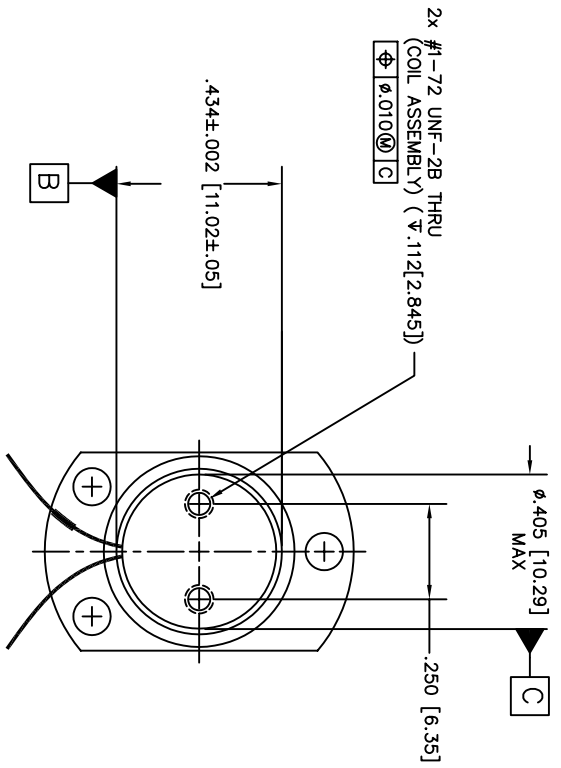
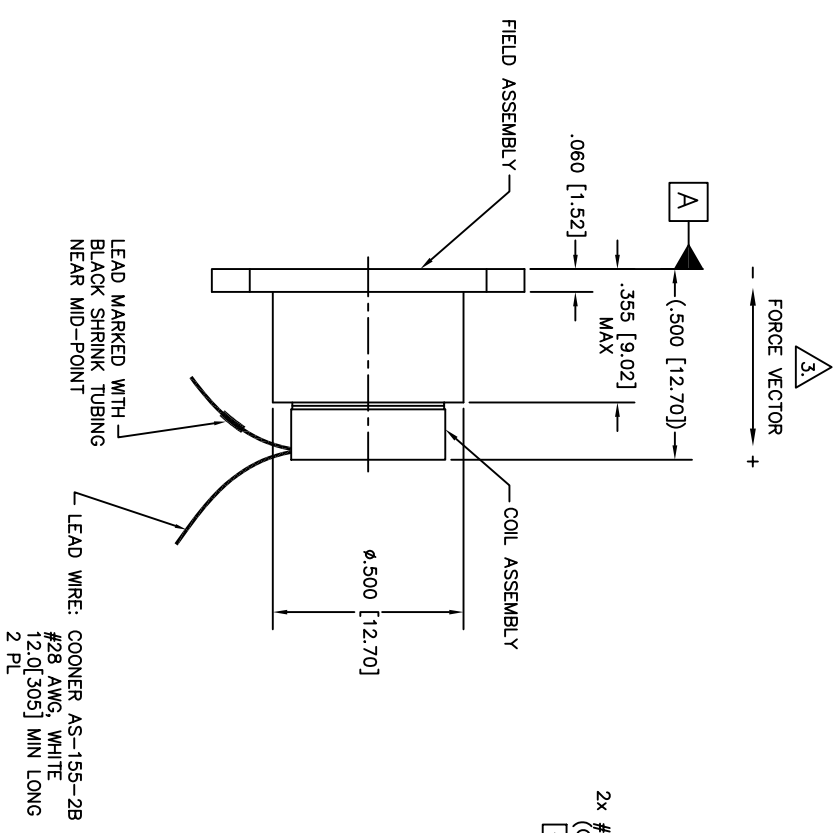
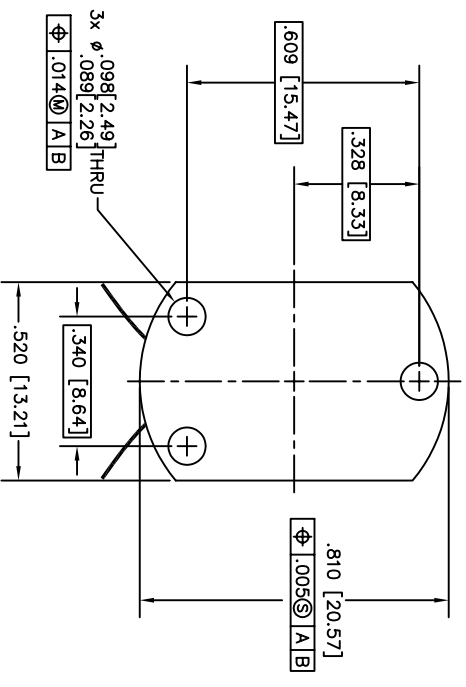


WINDING CONSTANTS *	UNITS	TOL	SYMBOL	WDC A
DC RESISTANCE	OHMS	±12.5%	R	4.0
VOLTAGE @ F_p	VOLTS	*****	V_p	4.84
CURRENT @ F_p	AMPERES	MAX.	I_p	1.21
FORCE SENSITIVITY	OZ/AMP	MIN.	K_f	2.07
BACK EMF CONSTANT	N/AMP	MIN.		0.575
	V/FT/SEC	MIN.		0.175
	V/AM/SEC	MIN.	K_B	0.575
INDUCTANCE *****	MICRO-HENRY	±15%	L	97.0

ACTUATOR PARAMETERS *	UNITS	SYMBOL	VALUE
PEAK FORCE **	OZ	F_p	2.5
	N		0.7
CONTINUOUS STALL FORCE ***	OZ	F_{cs}	1.13
	N		0.314
ACTUATOR CONSTANT *****	OZ/-WATT	K_A	1.04
	N/-WATT		0.29
ELECTRICAL TIME CONSTANT	MICRO-SEC	T_e	24.3
MECHANICAL TIME CONSTANT *****	MILLI-SEC	T_m	11.0
POWER IFR @ F_p *****	WATTS	P_p	5.83 MAX
	± INCHES		0.02
STROKE	± MM		0.508
	IN		0.015
CLEARANCE ON EACH SIDE OF COIL	MM		0.381
THEMAL RESISTANCE OF COIL	C/WATT	θ_{TH}	74
MAX. ALLOWABLE COIL TEMP.	C	TEMP	155
WEIGHT OF COIL ASSEMBLY	OZ	W_{TC}	0.032 MAX.
	G		0.907 MAX.
WEIGHT OF FIELD ASSEMBLY	OZ	W_{TF}	0.350 MAX.
	G		8.50 MAX.

* AT MID-STROKE & 25°C AMBIENT TEMPERATURE
 ** 10 SECONDS AT 25°C AMBIENT & 155°C COIL TEMPERATURE
 *** 25°C AMBIENT & 155°C COIL TEMPERATURE
 ***** MEASURED AT 1000 HZ
 ***** AT MINIMUM FORCE SENSITIVITY AND NOMINAL RESISTANCE



BEI KIMCO MAGNETICS DIVISION
 VISTA, CA 92081

THIRD ANGLE PROJECTION	DATE	TITLE	SIZE	SCALE
	7/12/90	LINEAR ACTUATOR	D 55789	1/1
UNLESS OTHERWISE SPECIFIED ALL DIMENSIONS ARE IN UNITS OF INCHES. DIMENSIONS IN BRACKETS ARE METRIC EQUIVALENTS. DIMENSIONS APPLY AFTER FINISH. DIMENSIONS IN PARENTHESES ARE TOLERANCES. DIMENSIONS IN PARENTHESES ARE TOLERANCES. DIMENSIONS IN PARENTHESES ARE TOLERANCES. DIMENSIONS IN PARENTHESES ARE TOLERANCES.	MECH CHECK	FILE NO.	DRW NO.	REV
	P. STAHL	4/1	LA05-05-000A	N
	HA PHAM	7/12/90		
	R. ELLIOTT			

3. A POSITIVE (+) VOLTAGE APPLIED TO THE MARKED LEAD WILL PRODUCE A FORCE ON THE COIL ASSEMBLY IN THE POSITIVE (+) DIRECTION.
 DIMENSION IN BRACKETS ARE MILLIMETERS [MM] AND ARE FOR REFERENCE ONLY.
 1. INTERPRET DIMENSIONS & TOLERANCES PER ASME Y14.5M-1994.
 NOTES: UNLESS OTHERWISE SPECIFIED

LTR	ECO NO.	DESCRIPTION	DRN	DATE	APP'D
L	050010	MATCH REV. TO AVANTE	JJC	1/20/05	MG
M	060113	UPDATE PARAMETERS	SLM	2/16/06	MG
N	060244	ADDED Rohs LOGO	RG	03/23/06	MG