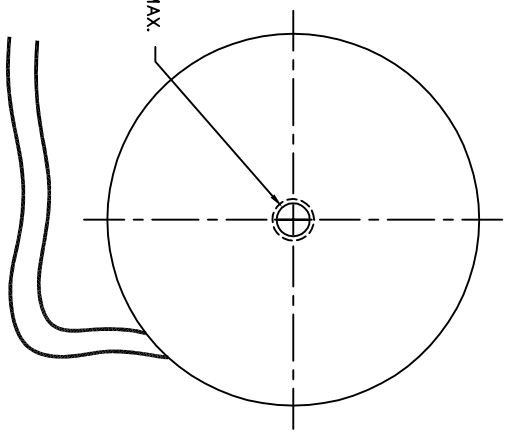
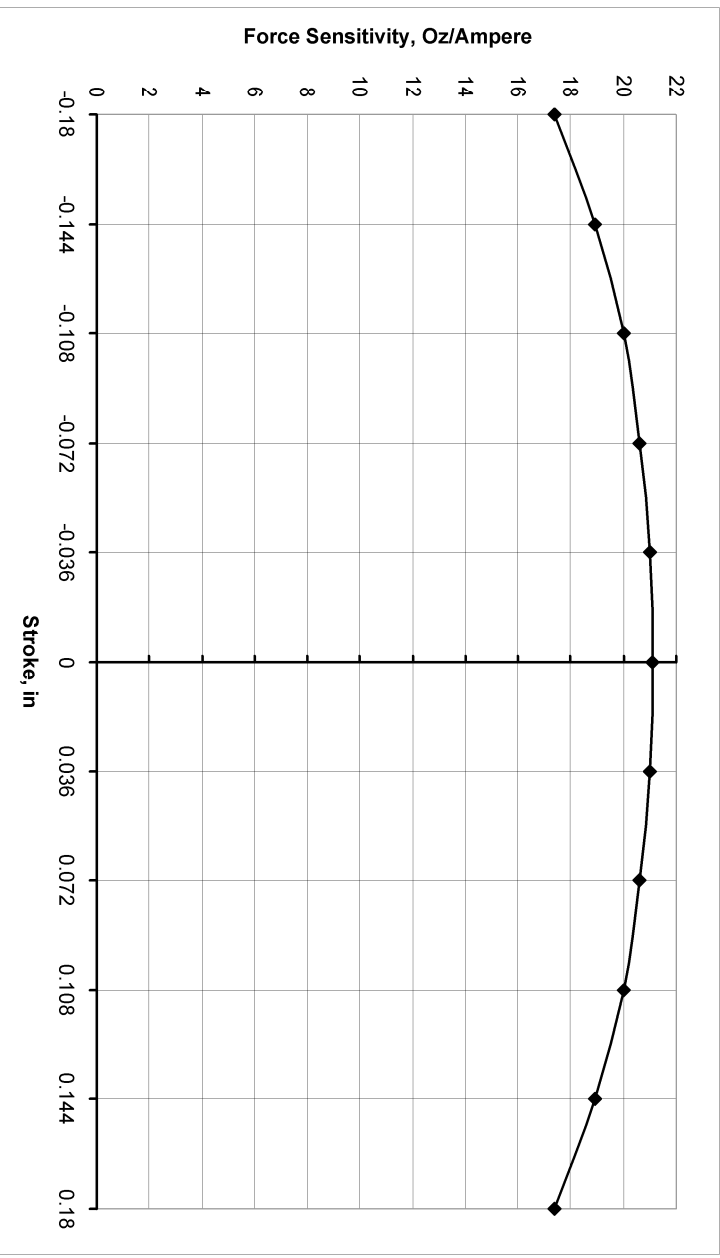
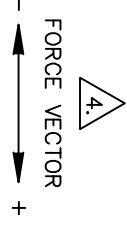
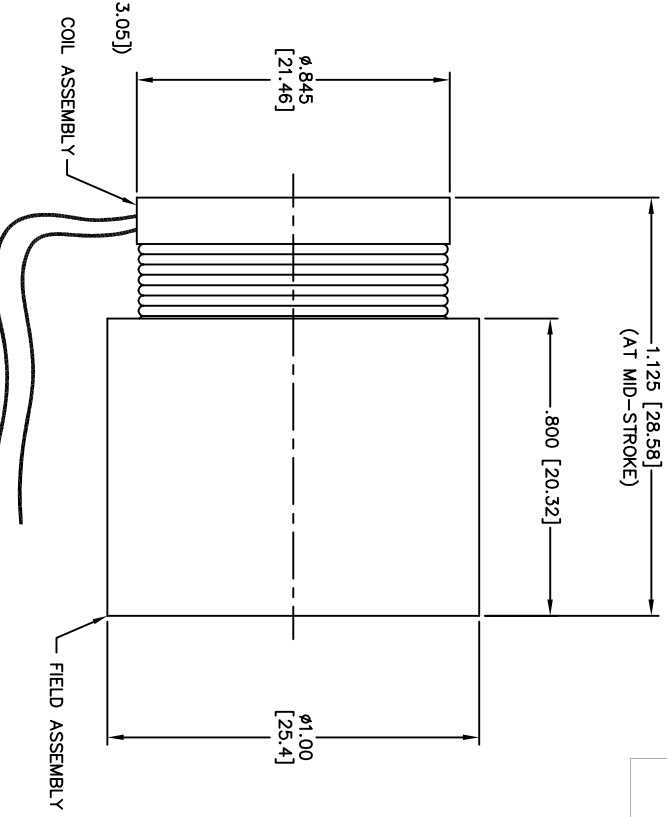
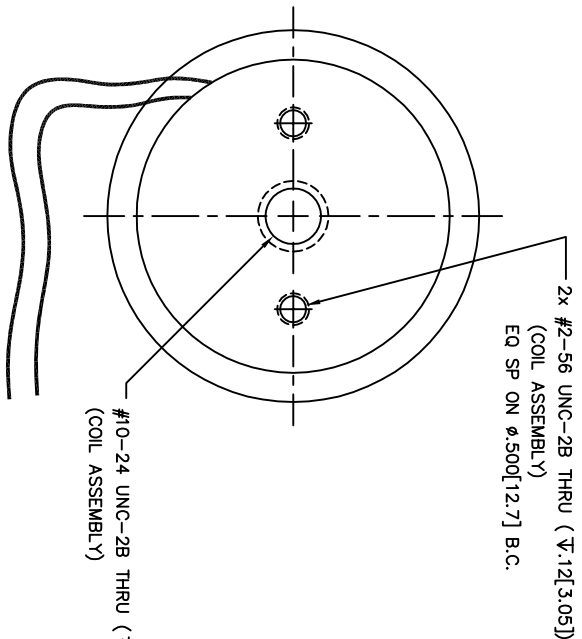


| WINDING CONSTANTS * | UNITS | TOL | SYMBOL | WDG Z |
|---------------------|-------------|---------|----------------|-------|
| DC RESISTANCE | OHMS | ±12.5% | R | 11.0 |
| VOLTAGE @ Fp | VOLTS | NOMINAL | Vp | 25.1 |
| CURRENT @ Fp | AMPERES | NOMINAL | Ip | 2.28 |
| FORCE SENSITIVITY | OZ/AMP | ±10% | Kf | 21.1 |
| | N/AMP | ±10% | | 5.87 |
| BACK EMF CONSTANT | V/FT/SEC | ±10% | | 1.79 |
| | V/M/SEC | ±10% | K _B | 5.87 |
| INDUCTANCE **** | MILLI-HENRY | ±15% | L | 3.05 |

| ACTUATOR PARAMETERS * | UNITS | SYMBOL | VALUE |
|--------------------------------|-----------|-----------------|-------|
| PEAK FORCE ** | OZ | Fp | 48 |
| | N | | 13.3 |
| CONTINUOUS STALL FORCE *** | OZ | Fcs | 17.8 |
| | N | | 4.95 |
| ACTUATOR CONSTANT | OZ/-WATT | K _A | 6.36 |
| | N/-WATT | | 1.77 |
| ELECTRICAL TIME CONSTANT | MICRO-SEC | T _E | 277 |
| MECHANICAL TIME CONSTANT | MILLI-SEC | T _M | 4.43 |
| POWER I ² R @ Fp | WATTS | Pp | 57.2 |
| STROKE | ± INCHES | | 0.180 |
| | ± MM | | 4.57 |
| CLEARANCE ON EACH SIDE OF COIL | IN | | 0.015 |
| | MM | | 0.38 |
| THERMAL RESISTANCE OF COIL | °C/WATT | θ _{JH} | 11.3 |
| MAX. ALLOWABLE COIL TEMP. | °C | TEMP | 155 |
| WEIGHT OF COIL ASSEMBLY | OZ | WT _C | 0.49 |
| | G | | 13.89 |
| WEIGHT OF FIELD ASSEMBLY | OZ | WT _F | 2.0 |
| | G | | 56.7 |

* 25°C AMBIENT TEMPERATURE
 ** 10 SECONDS AT 25°C AMBIENT & 155°C COIL TEMP
 *** 25°C AMBIENT & 155°C WINDING TEMPERATURE
 **** MEASURED AT 1000 HZ



2X LEAD WIRE: #28 AWG
 COONER WIRE, AS-155
 12.0[305] MIN. LONG
 (RED, BLACK)

- INSULATION RESISTANCE IS 100 MEGOHMS AT 500 VDC.
- A POSITIVE (+) VOLTAGE APPLIED TO THE RED LEAD WILL PRODUCE A FORCE ON THE COIL ASSEMBLY IN THE POSITIVE (+) DIRECTION.
- ALL ABBREVIATIONS LAW ASME Y14.38.
- INTERPRET DRAWING LAW ASME Y14.100.
- INTERPRET DIMENSIONING AND TOLERANCING LAW ASME Y14.5M-1994.

NOTES: UNLESS OTHERWISE SPECIFIED

| LTR | ECO NO. | DESCRIPTION | DRN | APP'D | DATE |
|-----|---------|------------------------------|-----|-------|----------|
| E | 080225 | ADD CHART, UPDATE DATA, R0HS | JWT | MG | 04/18/06 |
| F | 080406 | UPDATED THD HOLES CALL-OUT | RG | MG | 10/03/08 |



BEL KIMCO MAGNETICS DIVISION
 VISTA, CA 92081

LINEAR ACTUATOR

| DRAWN | DATE | TITLE |
|-------------|----------|-----------------|
| BUTTERFIELD | 05/23/97 | LINEAR ACTUATOR |
| MESH CHECK | 02/24/05 | |

| APP'D | DATE | SIZE | FSCH NO. | DWG NO. | REV |
|--------|----------|------|----------|--------------|-----|
| MARCOS | 05/23/97 | D | 55789 | LA10-12-027A | F |