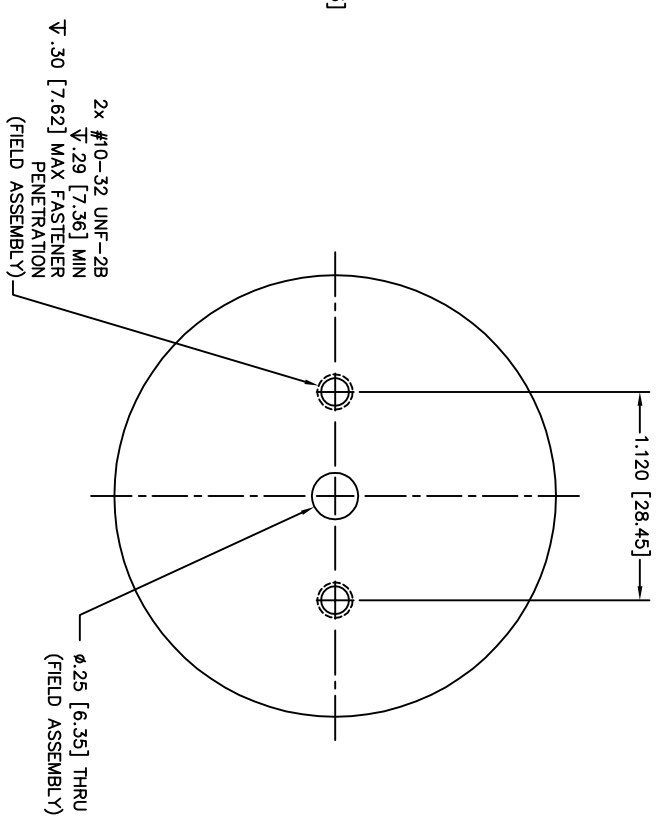
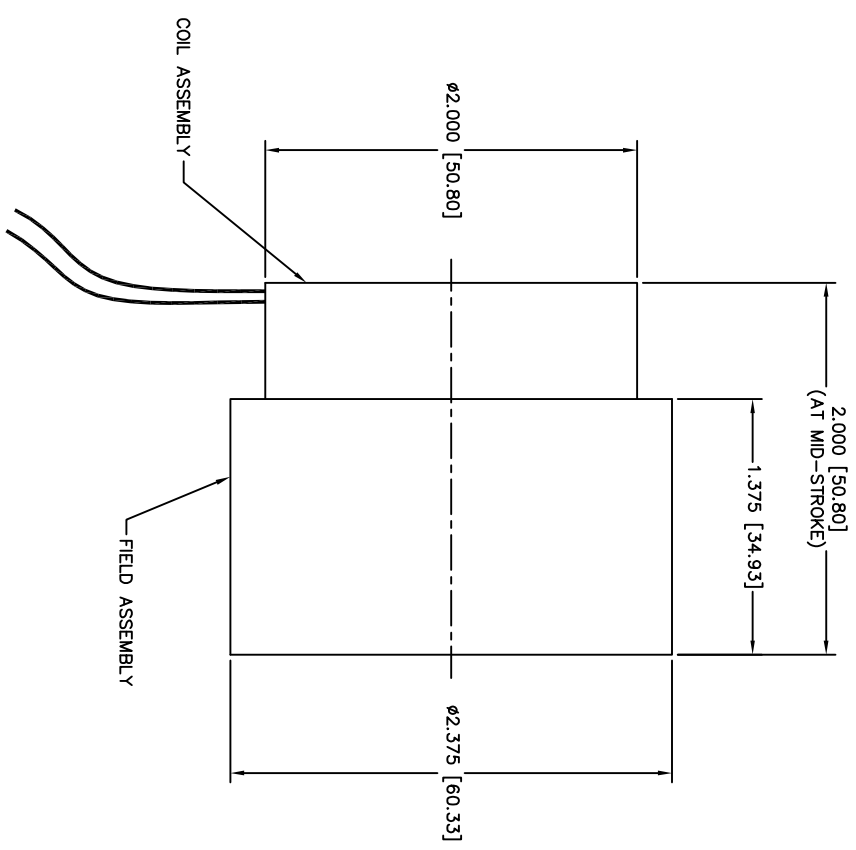
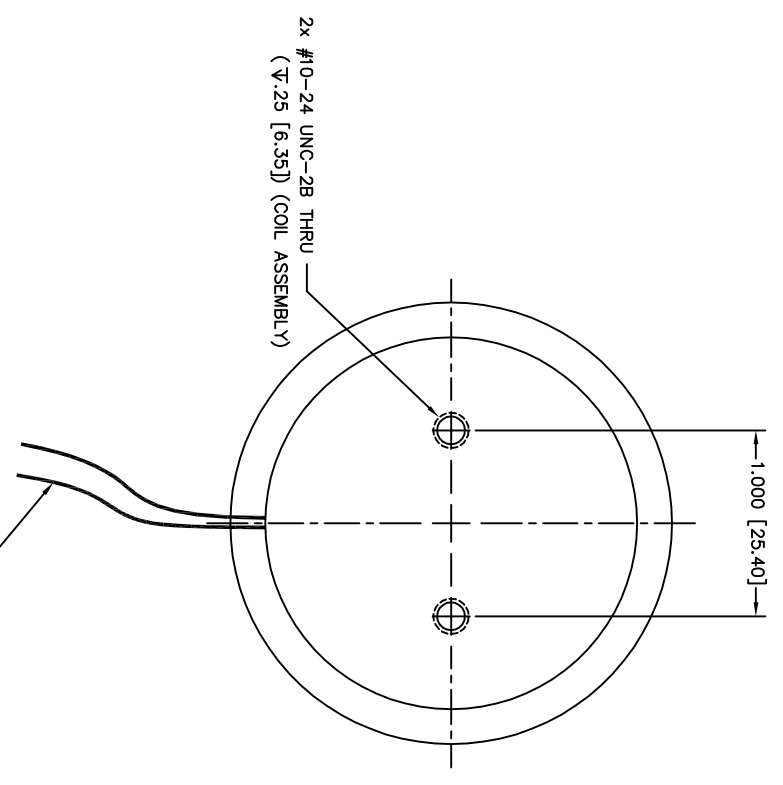
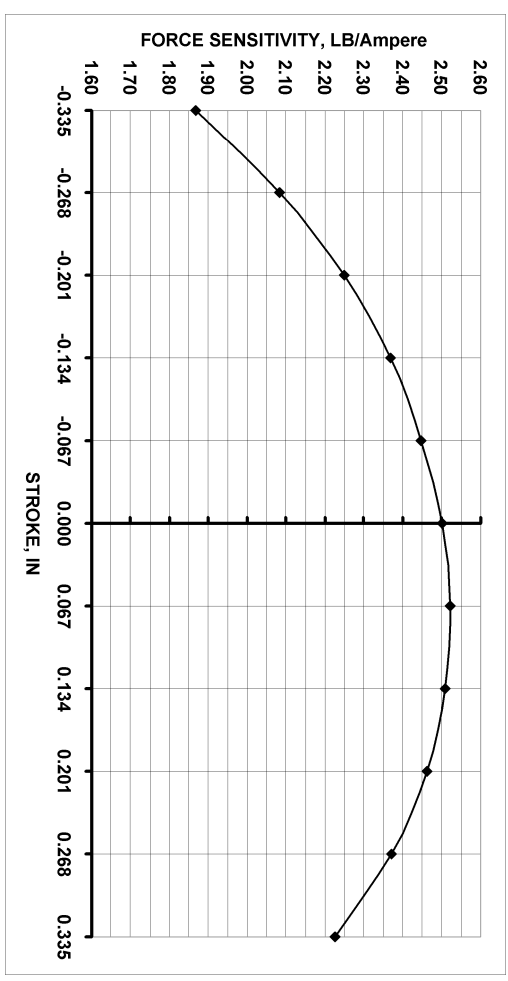


WINDING CONSTANTS *	UNITS	TOL	SYMBOL	WDG A
DC RESISTANCE	OHMS	±12.5%	R	2.2
VOLTAGE @ Fp	VOLTS	NOMINAL	Vp	22.0
CURRENT @ Fp	AMPERES	NOMINAL	Ip	10.0
FORCE SENSITIVITY	LB/AMP	±10%	Kf	2.5
	N/AMP	±10%		11.12
BACK EMF CONSTANT	V/FT/SEC	±10%	Kb	3.4
	V/M/SEC	±10%		11.15
INDUCTANCE ****	MILLI-HENRY	±30%	L	2.05

ACTUATOR PARAMETERS *	UNITS	SYMBOL	VALUE
PEAK FORCE **	LB	Fp	25
	N		111.21
CONTINUOUS STALL FORCE ***	LB	Fcs	5.9
	N		26.3
ACTUATOR CONSTANT	LB/-WATT	K A	1.69
	N/-WATT		7.52
ELECTRICAL TIME CONSTANT	MICRO-SEC	Te	932
MECHANICAL TIME CONSTANT	MILLI-SEC	Tm	2.9
POWER I/R @ Fp	WATTS	Pp	220
	± INCHES		0.325
STROKE	± MM		8.26
	IN		0.015
CLEARANCE ON EACH SIDE OF COIL	MM		0.38
	IN		7.1
THERMAL RESISTANCE OF COIL	°C/WATT	θTH	155
MAX. ALLOWABLE COIL TEMP.	°C	TEMP	155
WEIGHT OF COIL ASSEMBLY	LB	WTc	0.365
	KG		0.17
WEIGHT OF FIELD ASSEMBLY	LB	WTf	1.25
	KG		0.57

* AT MID-STROKE & 25°C AMBIENT TEMPERATURE
 ** 10 SECONDS AT 25°C AMBIENT & 155°C COIL TEMPERATURE
 *** 25°C AMBIENT & 155°C COIL TEMPERATURE
 **** MEASURED AT 1000 HZ



4. MECHANICAL OVERTRAVEL IN THE POSITIVE (+) DIRECTION IS .015 [.38] MIN.

3. A POSITIVE (+) VOLTAGE APPLIED TO THE RED LEAD WILL PRODUCE A FORCE ON THE COIL ASSEMBLY IN THE POSITIVE (+) DIRECTION.

- DIMENSION IN BRACKETS ARE MILLIMETERS [MM] AND ARE FOR REFERENCE ONLY.
- INTERPRET DIMENSIONS & TOLERANCES IAW ASME Y14.5M-1994.
- NOTES: UNLESS OTHERWISE SPECIFIED



BEI KIMCO MAGNETICS DIVISION
 VISTA, CA 92081

THIRD ANGLE PROJECTION		TITLE	
DRAWN	N. FRENCH	DATE	4/6/98
MACH CHECK	PHIL STAHL	12/3/04	
APPD	A. MARCOS	4/6/98	
FILE NO.	L:\TOP LEVEL\A...	SIZE	FSCM NO.
		D	55789
		SCALE	2/1
		DWG NO.	LA24-20-000A
		REV	F
		SHEET	1 OF 1