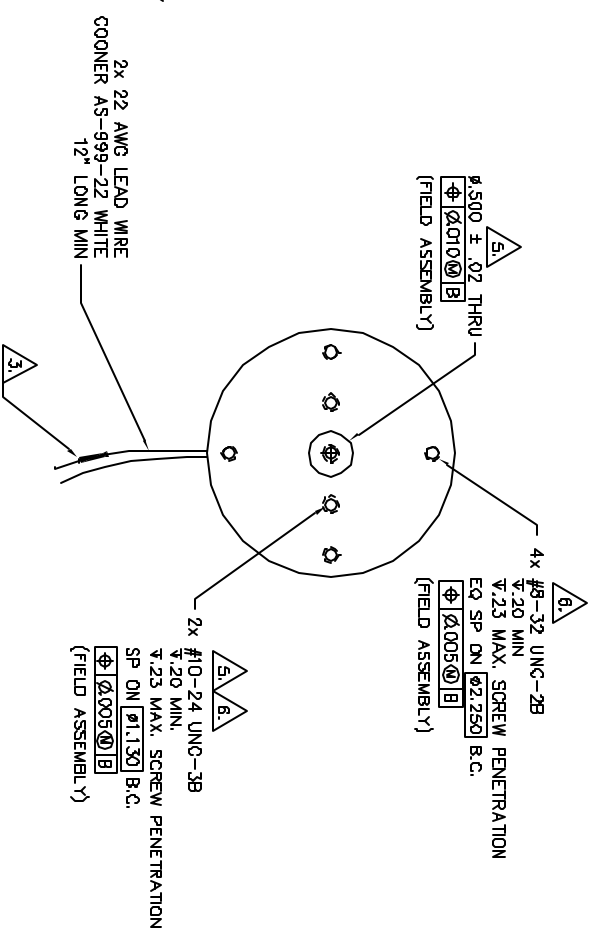
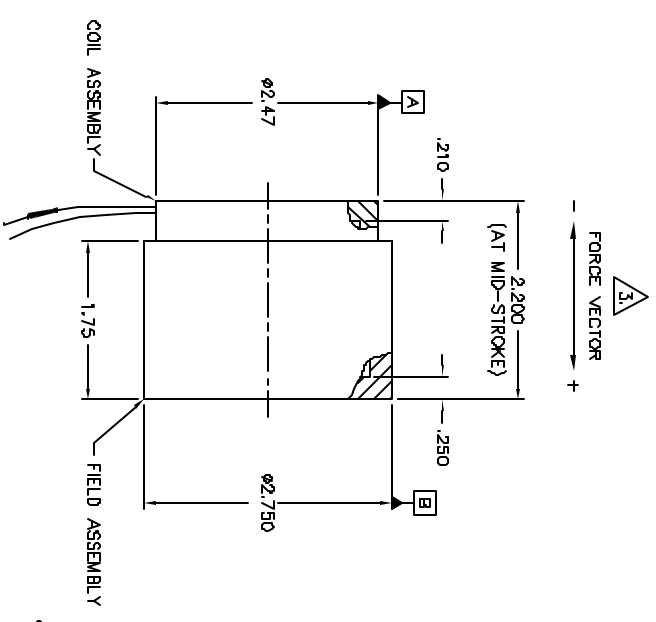
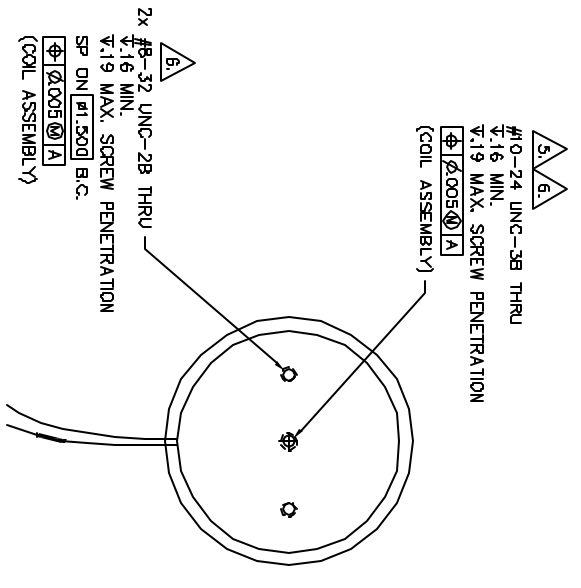


LR#	ED# NO.	DESCRIPTION	BY	DATE
D	044808	1P/D/A/E REV LEVEL TO MATCH BOM REV LEVEL	SJM	11/24/04
D	070125	ADD LEAD WIRE DESCRIPTION	JMT	5/09/07

WINDING CONSTANTS *	UNITS	TOL	SYMBOL	WDC A
DC RESISTANCE	OHMS	±12.5%	R	4.8
VOLTAGE @ F <sub>p</sub>	VOLTS	NOMINAL	V <sub>p</sub>	42.4
CURRENT @ F <sub>p</sub>	AMPERES	NOMINAL	I <sub>p</sub>	8.82
FORCE SENSITIVITY	LB/AMP	±10%	K <sub>F</sub>	6.8
	N/AMP	±10%		30.25
BACK EMF CONSTANT	V/FT/SEC	±10%	K <sub>B</sub>	8.2
	V/M/SEC	±10%		30.25
INDUCTANCE ****	MILLI-HENRY	±30%	L	3.4

ACTUATOR PARAMETERS *	UNITS	SYMBOL	VALUE
PEAK FORCE **	LB	F <sub>p</sub>	60.0
	N		266.9
CONTINUOUS STALL FORCE ***	LB	F <sub>cs</sub>	18.6
	N		87.74
ACTUATOR CONSTANT	LB / V/WATT	K <sub>A</sub>	3.10
	N / V/WATT		13.79
ELECTRICAL TIME CONSTANT	MICRO-SEC	T <sub>E</sub>	708.0
MECHANICAL TIME CONSTANT	MILLI-SEC	T <sub>M</sub>	1.2
POWER I <sub>p</sub> R @ F <sub>p</sub>	WATTS	P <sub>p</sub>	374.0
	± INCHES		0.225
STROKE	± MM		5.72
	IN		0.2015
CLEARANCE ON EACH SIDE OF COIL	MM		0.38
	IN		0.015
THERMAL RESISTANCE OF COIL IN STILL AIR	°C/WATT	θ <sub>TH</sub>	2.4
MAX ALLOWABLE COIL TEMP.	°C	TEMP	155
WEIGHT OF COIL ASSEMBLY	LB	WT <sub>Q</sub>	0.50
	KG		0.23
WEIGHT OF FIELD ASSEMBLY	LB	WT <sub>F</sub>	2.0
	KG		0.91

\* @ 25°C AMBIENT AND MID-STROKE POSITION  
 \*\* 10 SECONDS AT 25°C AMBIENT, 185°C COIL TEMP  
 \*\*\* 25°C AMBIENT & 155°C WINDING TEMPERATURE  
 \*\*\*\* MEASURED AT 1000 HZ



- 6. GEOMETRIC TOLERANCE APPLIES TO PILOT HOLE ONLY.
- 5. THIS FEATURE FOR BEI ASSEMBLY ONLY.
- 4. MECHANICAL OVERTRAVEL IN THE POSITIVE (+) DIRECTION IS .015 MINIMUM.
- 3. A POSITIVE (+) VOLTAGE APPLIED TO THE MARKED LEAD WILL PRODUCE A FORCE ON THE COIL ASSEMBLY IN THE POSITIVE (+) DIRECTION.
- 2. INSULATION RESISTANCE: 100 MEGOHMS MINIMUM AT 500 VDC.
- 1. INTERPRET DIMENSIONS & TOLERANCES PER ANSI Y14.5M-1994.

U.S. PATENT NO.  
5,345,206

Franchiser of the BEI name one involved in the subject matter of this method and all other rights reserved. All other rights reserved. This confidential and proprietary information is being disclosed to you for a specific purpose, and the recipient by accepting this method agrees to keep this information confidential and not to disclose it to any other person without the prior written consent of the franchisor. This document is not to be used for any other purpose without the prior written consent of the franchisor.

THIRD ANGLE PROJECTION	DATE	TIME
UNLESS OTHERWISE SPECIFIED ALL DIMENSIONS ARE IN INCHES - SURFACE FINISHES ARE AS SHOWN - DIMENSIONS ARE TO CENTER UNLESS OTHERWISE SPECIFIED	DATE	TIME
THE DIMENSIONS ARE IN INCHES UNLESS OTHERWISE SPECIFIED	DATE	TIME

**BEI** KIMCO MAGNETICS DIVISION  
 VISTA, CA 92081



REV	DATE	BY	CHKD
D	11/24/04	R. ELLIOTT	
	1/29/04	P. STAHL	
	5/24/04	M. GODKIN	

LA28-22-000A D