

4

3

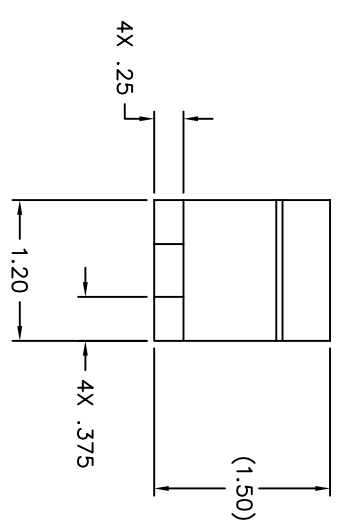
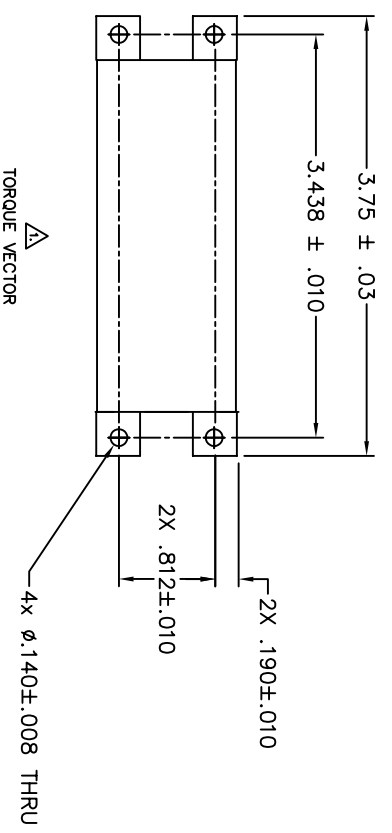
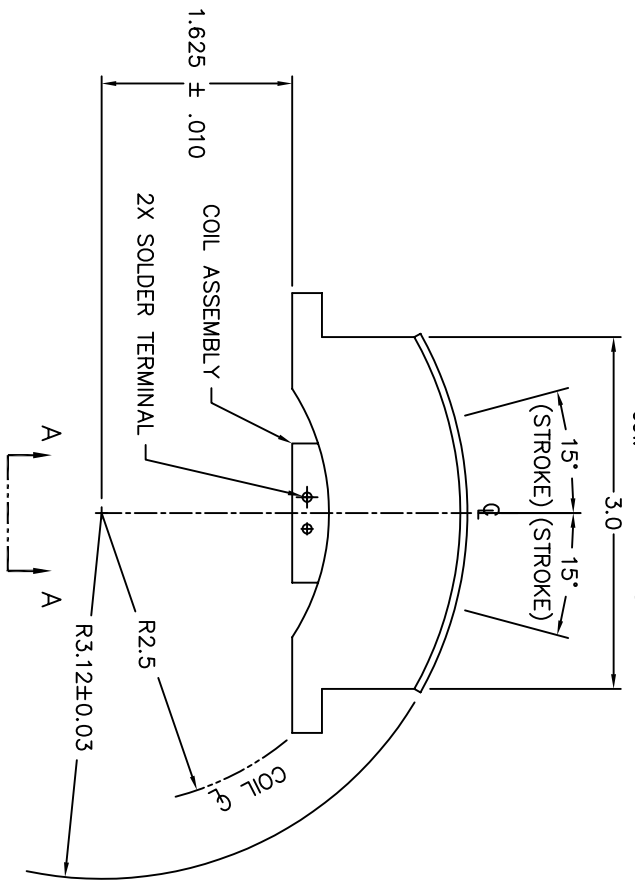
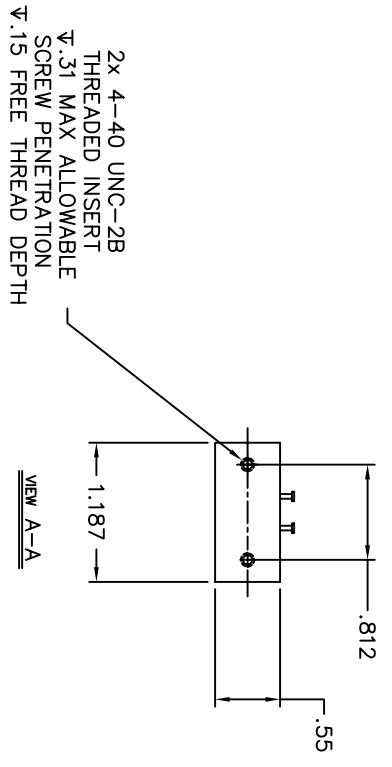
2

1

WINDING CONSTANTS *	UNITS	TOL	SYMBOL	WDG A
DC RESISTANCE	OHMS	±12.5%	R	1.9
VOLTAGE @ $T_p$	VOLTS	NOMINAL	$V_p$	12.0
CURRENT @ $T_p$	AMPERES	NOMINAL	$I_p$	6.31
TORQUE SENSITIVITY	OZ-IN/AMP	±10%	$K_T$	19
BACK EMF CONSTANT	V/(RAD/SEC)	±10%	$K_B$	0.134
INDUCTANCE ****	MICRO-HENRY	±15%	L	1.38

ACTUATOR PARAMETERS *	UNITS	SYMBOL	VALUE
PEAK TORQUE **	OZ-IN	$T_p$	120
CONTINUOUS STALL TORQUE ***	OZ-IN	$T_{CS}$	56.1
ACTUATOR CONSTANT	OZ-IN/√W	$K_A$	13.8
ELECTRICAL TIME CONSTANT	MICRO-SEC	$T_E$	730
MECHANICAL TIME CONSTANT	MILLI-SEC	$T_M$	9.0
POWER $1/2R @ T_p$	WATTS	$P_p$	75.8
COIL ASSEMBLY INERTIA	OZ-IN-SEC <sup>2</sup>	$J_M$	0.008
STROKE (ANGULAR)	± DEGREE		15
COIL CLEARANCE	IN		0.015
THERMAL RESISTANCE OF COIL	°C/WATT	$\theta_{TH}$	5.2
MAX. ALLOWABLE WINDING TEMP.	°C	TEMP	155
WEIGHT OF COIL ASSEMBLY	OZ	$WT_{CA}$	0.75
TOTAL WEIGHT	OZ	$WT_T$	14.7

\* AT MID-STROKE & 25° AMBIENT TEMPERATURE  
 \*\* 10 SECONDS AT 25°C AMBIENT & 155°C COIL TEMPERATURE  
 \*\*\* 25°C AMBIENT & 155°C WINDING TEMPERATURE  
 \*\*\*\* MEASURED AT 1000 HZ.



**BEI** KIMCO MAGNETICS DIVISION  
 VISTA, CA 92081

ROTARY ACTUATOR

**THIRD ANGLE PROJECTION**  
 UNLESS OTHERWISE SPECIFIED:  
 -ALL DIMENSIONS ARE IN INCHES  
 -BREAK SHARP EDGES .015 MAX.  
 -SURFACE ROUGHNESS: √63  
 -DIMENSIONS APPLY AFTER FINISH  
 -MAX FILET R: .010  
 TOLERANCES:  
 DECIMALS ± .010  
 ANGULAR ± 30°  
 .XXX ± .005  
 DO NOT SCALE DRAWING

Proprietary rights of BEI Kinco are hereby reserved in the subject matter to this manufacturer and sales pertaining to such subject matter are expressly reserved. This confidential and proprietary document is submitted for a specified purpose, and the recipient by accepting this material agrees that this material will not be used, copied, or reproduced in whole or in part nor its contents revealed in any manner or to any person except to meet the purpose for which it was delivered.

1. A POSITIVE (+) VOLTAGE APPLIED TO THE (+) TERMINAL WILL PRODUCE A TORQUE ON THE COIL ASSEMBLY IN THE CW DIRECTION WHEN VIEWED FROM THE TERMINAL SIDE.  
 NOTES: UNLESS OTHERWISE SPECIFIED

4

3

2

1

LTR	ECO NO.	DESCRIPTION	DWN	APP'D	DATE
L	99-0886	WINDING LITER A WAS: Z	SMH	MG	11/12/98
M	070044	UPDATE DRAWING, ADDED ROHS LOGO	RG	MG	02/02/07

RA60-10-001A M

RA60-10-001A M